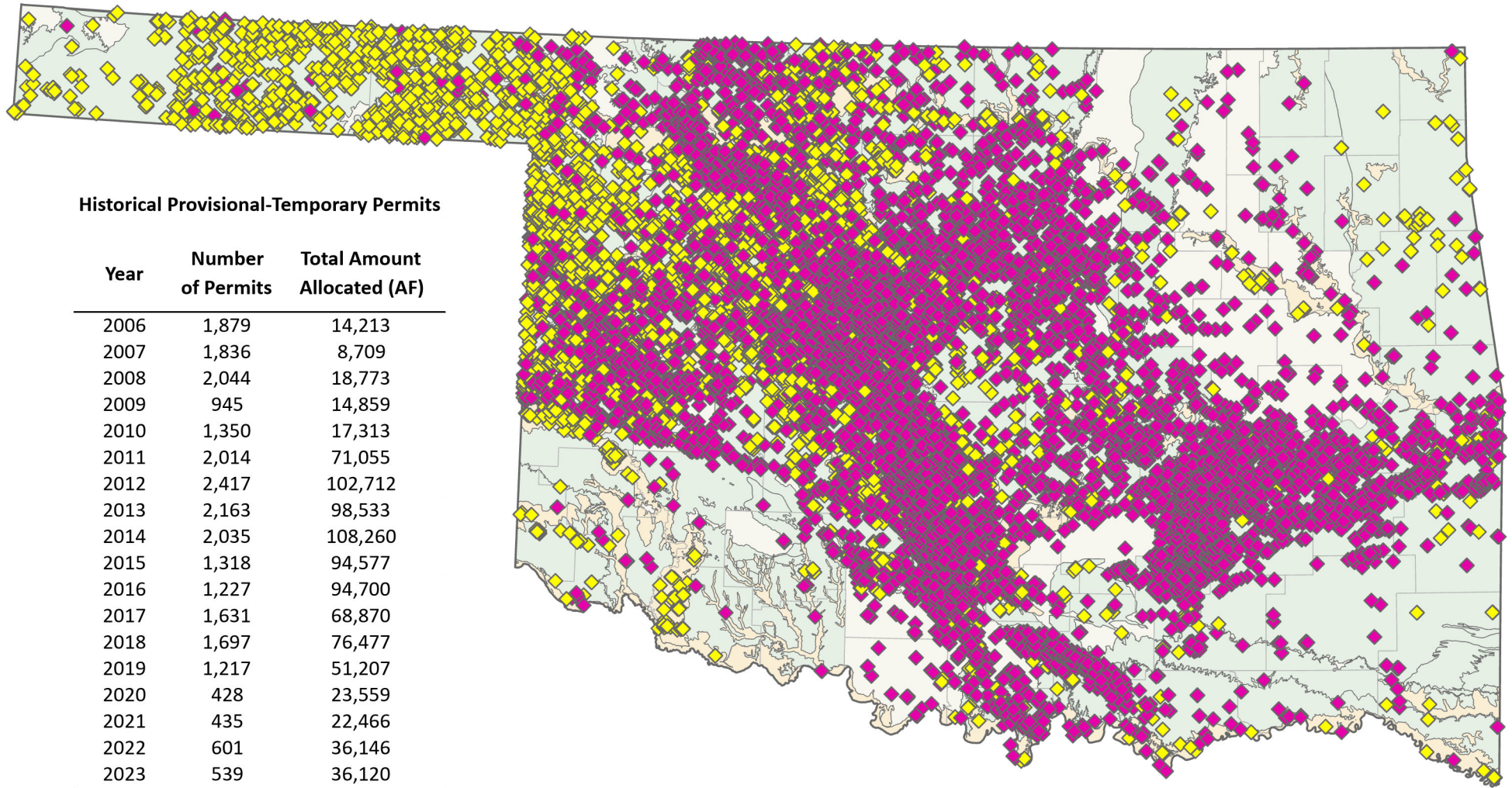


# Oklahoma Water Rights

## (Historical) 90-Day Provisional–Temporary Permits



Historical Provisional-Temporary Permits

Year	Number of Permits	Total Amount Allocated (AF)
2006	1,879	14,213
2007	1,836	8,709
2008	2,044	18,773
2009	945	14,859
2010	1,350	17,313
2011	2,014	71,055
2012	2,417	102,712
2013	2,163	98,533
2014	2,035	108,260
2015	1,318	94,577
2016	1,227	94,700
2017	1,631	68,870
2018	1,697	76,477
2019	1,217	51,207
2020	428	23,559
2021	435	22,466
2022	601	36,146
2023	539	36,120
2024	513	39,591
2025	496	40,577
2026	212	13,454
<b>TOTALS</b>	<b>26,997</b>	<b>1,052,171</b>

- Permit Type
- ◆ Groundwater Wells
  - ◆ Surface Water Diversions
- Aquifer Type
- Alluvium and Terrace
  - Bedrock



0 50 Miles

The purpose of this map is to provide a graphic representation of the spatial location of 90-Day Provisional-Temporary groundwater wells and surface water diversions in the State of Oklahoma. For more information about water rights visit the OWRB's home page at <https://www.oklahoma.gov/owrb> ( 6/3/2026 )